

VICTORIA REATH

HEIGHT : 5'10

BUST : 33.5

WAIST : 25

HIPS : 35

SHOES : 5.5

EYES : BLACK

HAIRS : BLACK



HEIGHT : 5'10 BUST : 33.5 WAIST : 25 HIPS : 35 SHOES : 5.5 EYES : BLACK HAIRS : BLACK



crystal.
models

HEIGHT : 5'10 BUST : 33.5 WAIST : 25 HIPS : 35 SHOES : 5.5 EYES : BLACK HAIRS : BLACK



VICKY @ JAG.

VICKY WEARS DRESS
TOM FORD C/O
ALBRIGHT FASHION
LIBRARY. SHOES RICK
OWENS.

PHOTOGRAPHED &
STYLED BY NATALIE
TAUGER. ART DIRECTION
CHRISTINA Sulpizio.
MAKEUP ROSE GRACE.
HAIR ANTON
ALEXANDER.
PRODUCTION IRIS
WORLD. CASTING
THE ESTABLISHMENT.



HEIGHT : 5'10 BUST : 33.5 WAIST : 25 HIPS : 35 SHOES : 5.5 EYES : BLACK HAIRS : BLACK



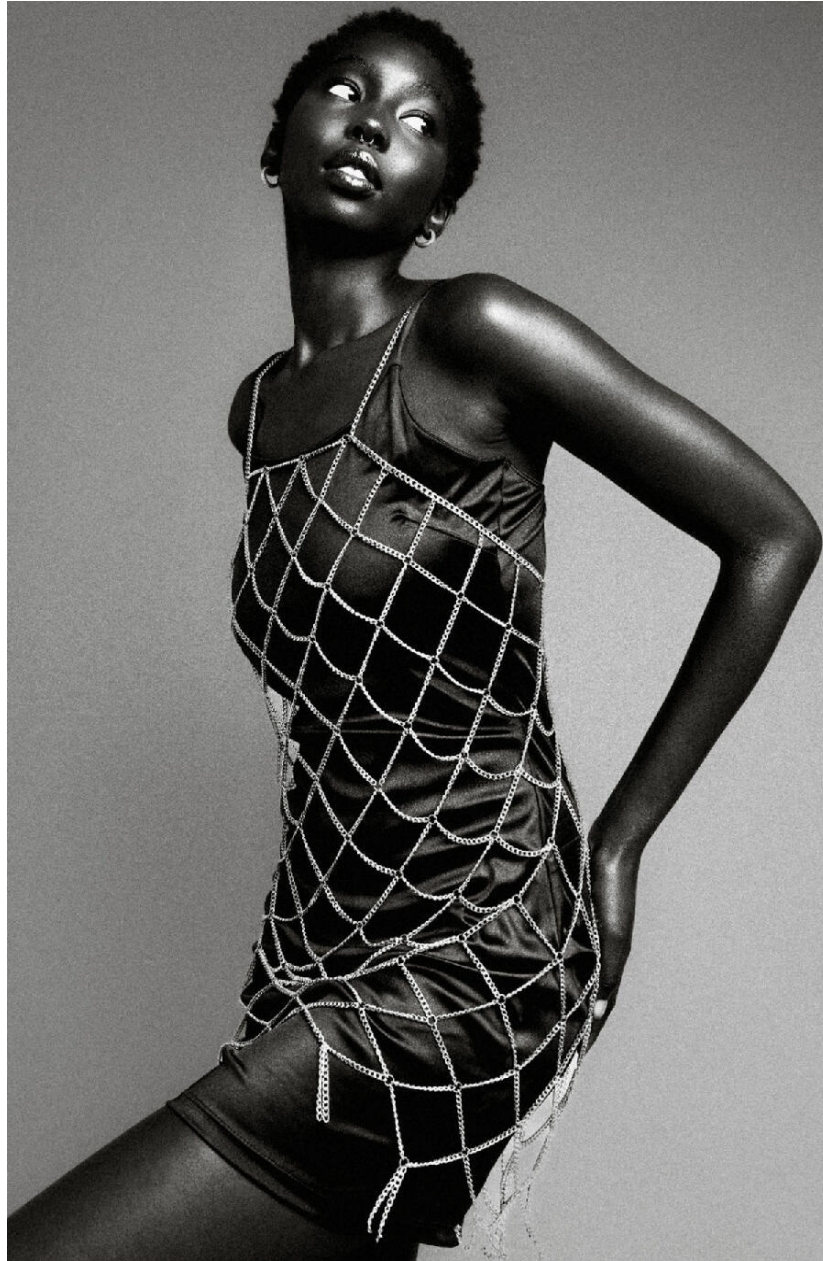
crystal.
models

HEIGHT : 5'10 BUST : 33.5 WAIST : 25 HIPS : 35 SHOES : 5.5 EYES : BLACK HAIRS : BLACK



crystal.
models

HEIGHT : 5'10 BUST : 33.5 WAIST : 25 HIPS : 35 SHOES : 5.5 EYES : BLACK HAIRS : BLACK



crystal.
models

HEIGHT : 5'10 BUST : 33.5 WAIST : 25 HIPS : 35 SHOES : 5.5 EYES : BLACK HAIRS : BLACK



crystal.
models